

CODE NUMBER

3366105

DESCRIPTION

Sloan® XLERATOR® Sensor-Operated Wall - Surface Hand Dryer
 EHD-501-ECO, 110/120V, Sloan® XLERATOR® Sensor-Operated Wall
 - Surface Hand Dryer.

DETAILS

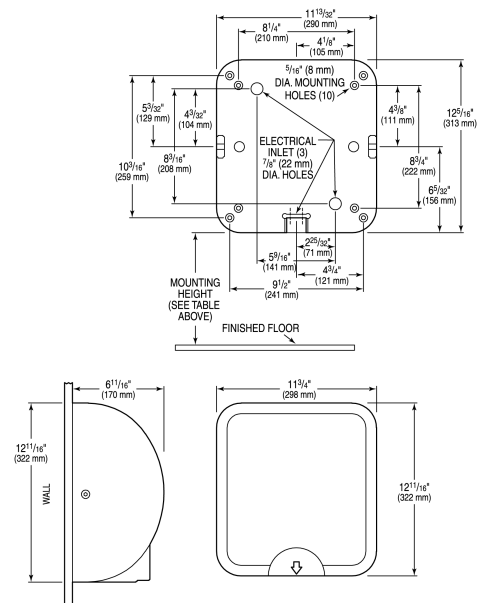
- Finish: Brushed Nickel (BN)
- Voltage: 110/120V ()
- Wattage: 50/60Hz ()
- Amperage: 4.3-4.5 ()
- Mounting: Wall - Surface
- Power Type: Hardwired
- Depth: 6 86/125" (170mm)
- Height: 12 11/16" (322mm)
- Width: 11 3/4" (298mm)

FEATURES

- Hygienic hand drying solution
- 10 second dry time
- Electric Specifications: 110-120V - 4.3-4.5 Amps, 460-530 Watts, 50/60 Hz
- Adjustable speed and sound (High-Low)
- No Heat option
- 95% cost savings vs. paper towels
- Weight: 15-17 lbs.
- Vandal resistant cover design
- Suggested Mounting Heights for Ideal Performance (from floor to bottom of dryer): Men: 45" (114 cm), Women: 43" (109 cm), Teenagers: 41" (104 cm), Children: 35" (89 cm), ADA: 37" (94 cm). Note: When mounting for any user ensure that it is mounted below the 48" ADA Maximum
- Can install multiple units on one circuit
- 35-second lockout feature if hands are not removed
- Externally visible Red LED light that flashes error codes to assist in troubleshooting and identify if filter has been clogged
- Virtually maintenance free
- Quantity Recommendations: 1 dryer for every 2 sink stations is sufficient for most applications. For high traffic applications we suggest 1 dryer per sink station.
- Variations: Available in multiple finishes/colors, available with HEPA filter, available in standard model with heat option
- Available in Polished White, Matte White, Polished Chrome, Brushed Nickel and Graphite
- Optional Add Ons: Recess kit for ADA compliance, Noise reduction nozzle (note: reduces the decibel level by 9db but increases dry time by approx. 3 seconds), Wall Guards (White, Black, Stainless), XChanger Paper Towel Retrofit Kit either ADA height or standard height

DOWNLOADS

- [Sloan XLERATOR and Sloan XLERATOR Eco Hand Dryer Instructions](#)



COMPLIANCES & CERTIFICATIONS



(BAA Compliant, cUL Certified, EPD, Proposition 65, UL Certified)

RECOMMENDED SPECIFICATION

Sloan Xlerator Eco Sensor Operated Hand Dryer. 120V/110V Brushed Nickel Finish.

NOTES

All information contained within this document subject to change without notice.

Sloan 10500 Seymour Ave, Franklin Park, IL 60131

Phone: 800.982.5839 • Fax: 800.447.8329 • sloan.com

- [Additional Downloads](#)